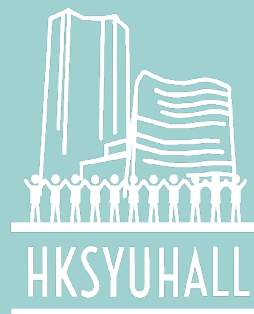




# 香港樹仁大學

## 校外住宿資訊站

宿舍管理部

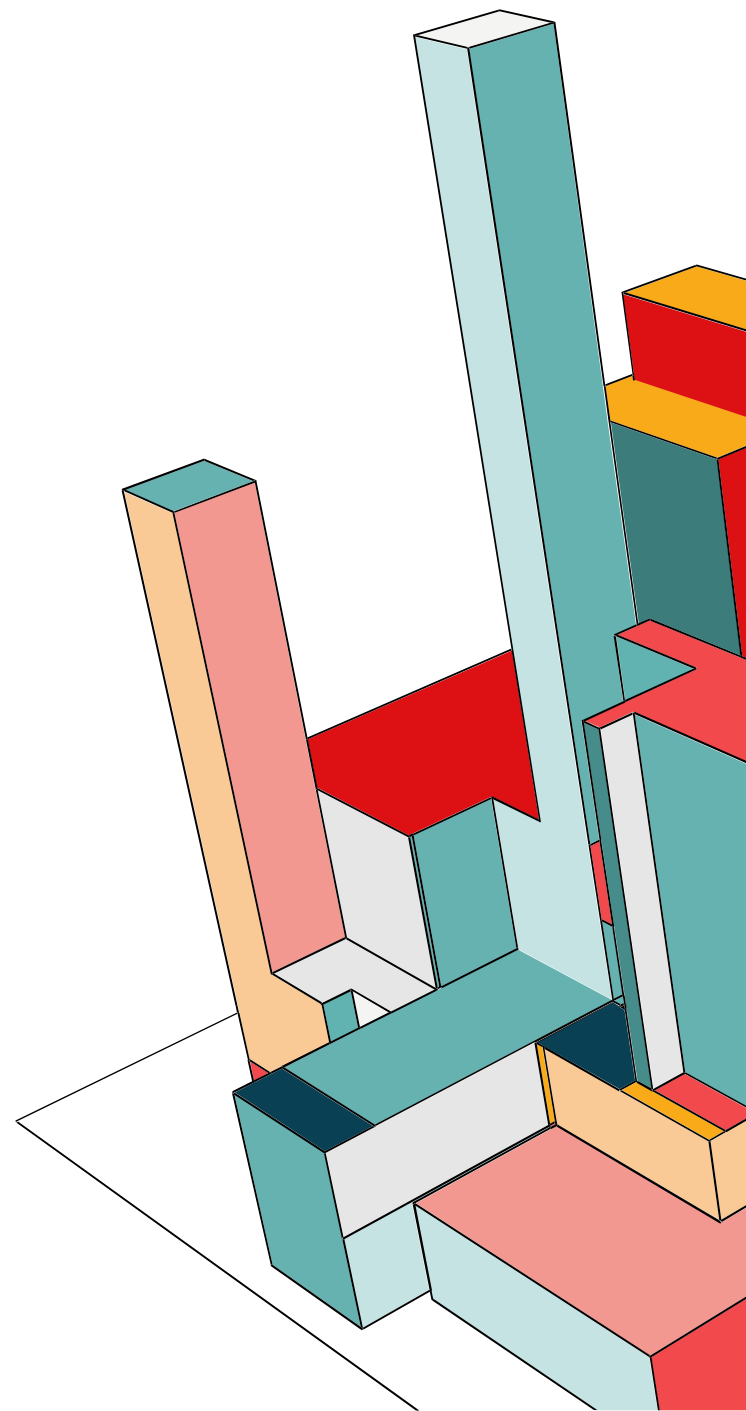


Hall Management Unit

# 前言

欢迎来到香港树仁大学！宿舍管理部为协助非本地同学尽早适应大学及香港的生活，因此编辑「校外住宿资讯站」供有需要的同学在香港寻找合适的住宿。

当同学们踏上来港求学之旅时，找到合适的住所是至关重要的一步。本网页旨在提供有关校外住宿的重要信息和资源。宿舍管理部希望可以帮助同学更容易了解本地租房政策以及在香港租房时需要注意的一些重点。无论您是刚到香港寻找第一个住处的新生，还是计划在校外居住的在读生，我们都希望能够帮助您做出合适的决定。

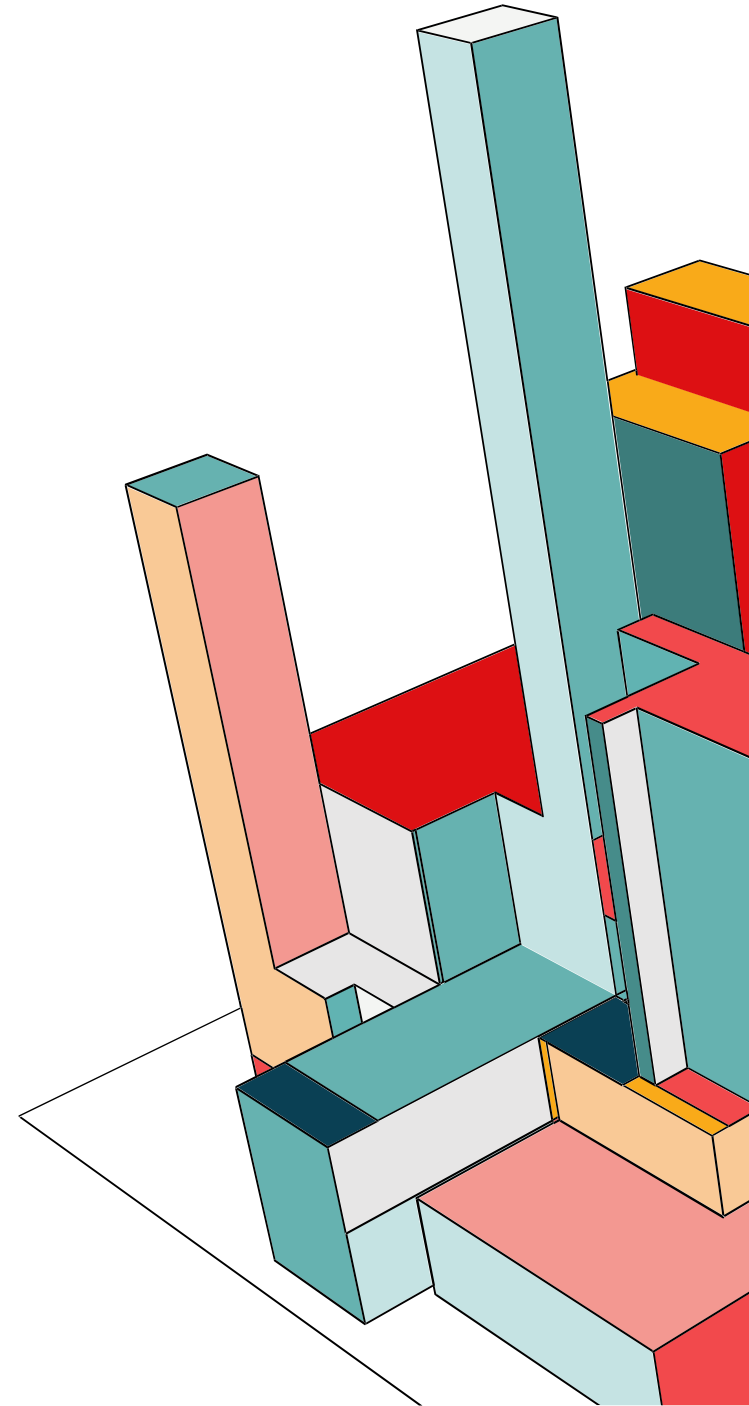


# 在此页面中，您将找到：

- 寻找住所：搜索合适住宿的技巧，包括在线资源和本地房源。
- 租赁协议：关于租赁条款、租户权利和责任的重要信息。
- 预算：关于估算住房成本和有效管理预算的指导。
- 住宿类型：各种住房选择概览，包括公寓、合租房等。
- 社区资源：关于租住地区附近的服务、交通和便利设施的信息，可以帮助您提升生活体验。

我们鼓励您全面了解您的选择，如有任何其他问题或需要帮助，请联系宿舍管理部。您的居住环境对您的学业成功和个人幸福至关重要。

祝您在香港顺利找到合适的住宿！



# 租賃須知及指南



非本地學生在香港租屋指南



安心租屋指南



「專家分享：來港租買房屋避坑指南」網上講座重溫

# 住宿类型

公寓  
或  
酒店

非牟利机构  
营运  
(NGOs)

私人租赁  
物业

# 社区资源

- 香港树仁大学，校址位于香港岛东区，北角宝马山上。在这里可以俯瞰整个维多利亚港壮阔的景致。仁大沿宝马山慧翠道而建，设有研究院综合大楼、宿舍文康大楼、邵美珍堂、教学大楼和图书馆综合大楼，并设两个食堂、一间咖啡店及休憩区域供学生聚会、休息和享用。
- 香港岛东区及邻近的湾仔区，包括北角、炮台山、天后、铜锣湾等地区，为学生提供一系列生活所需，例如超级市场，生活用品店、餐厅、家具店及公共图书馆、医院、诊所及康乐运动场地等。
- 学生可以乘搭公共交通工具例如城巴27号北角码头来往宝马山或85号小西湾（蓝湾半岛）来往宝马山。绿色专线小巴25号可于港铁铜锣湾站来往宝马山以及49M在港铁天后站来往宝马山。
- 学校亦提供校巴服务于指定时间接载学生来往港铁鲗鱼涌站或铜锣湾站
- 交通信息详情可参阅本校网站：  
<https://www.hksyu.edu/tc/campus/campus-transportation>

# 公寓或酒店（香港岛）

公寓名称

YHill by Y.X

YHill by Y.X 大學生公寓Student Accommodation

<https://ydotx.com/zh/locations/yhill/>

地点:香港西環山道71-77號

照片



公寓名称

Contented Living

安怡居

<https://www.contentedlivings.com/room/?lang=zh-hans>

地点:皇后大道西341-343號西營盤

照片



# 公寓或酒店（香港岛）

公寓名称

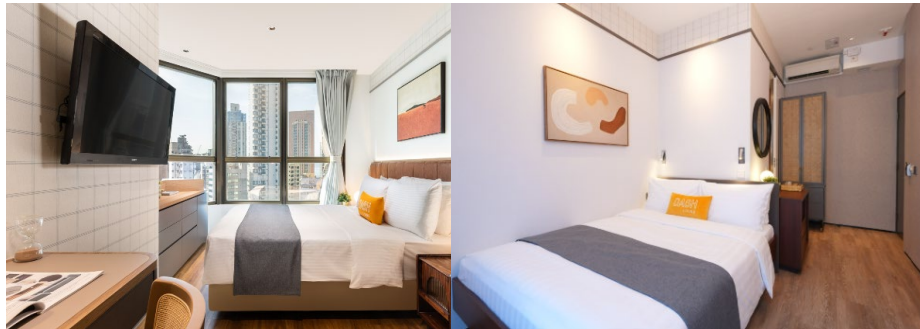
Dash living

Dash 服務式住宅

<https://www.dash.co/zh-tw/hong-kong>

地点:中環荷李活道263號

照片



公寓名称

Owl Square@North Point

Owl Square 服務式住宅

<https://owlsquarecoliving.com/zh-hant/locations/detail/kam-ping-mansion>

地点:北角站 B1 出口

照片



# 公寓或酒店（香港岛）

酒店名称

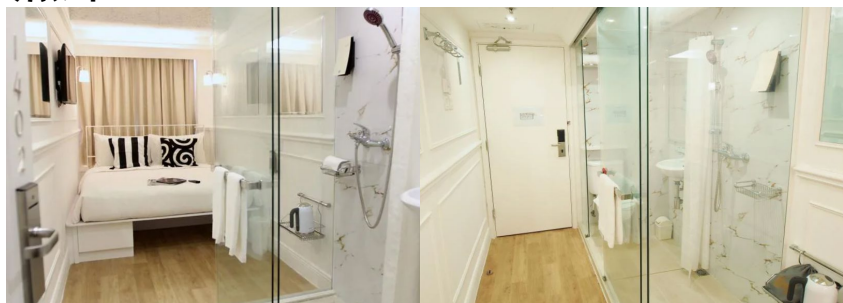
MINI HOTEL CAUSEWAY BAY

香港銅鑼灣迷你酒店

<https://www.minihotel.hk/zh-causeway-bay>

地点: 香港銅鑼灣新會道8號

照片



酒店名称

IBIS HONG KONG NORTH POINT

宜必思香港北角酒店

<https://ibis.accor.com/zh/destination/city/hotels-hong-kong-v7750.html>

地点: 北角渣華道138號

照片



# 公寓或酒店（香港岛）

酒店名称

Harbour Plaza North Point

香港北角海逸酒店

<https://www.harbour-plaza.com/northpoint/sc/>

地点:香港北角英皇道 665 號

照片



酒店名称

Iclub Fortress Hill Hotel

富薈炮台山酒店

<https://www.iclub-hotels.com/zh-CN/iclub-fortress-hill-hotel>

地点:北角麥連街18號

照片



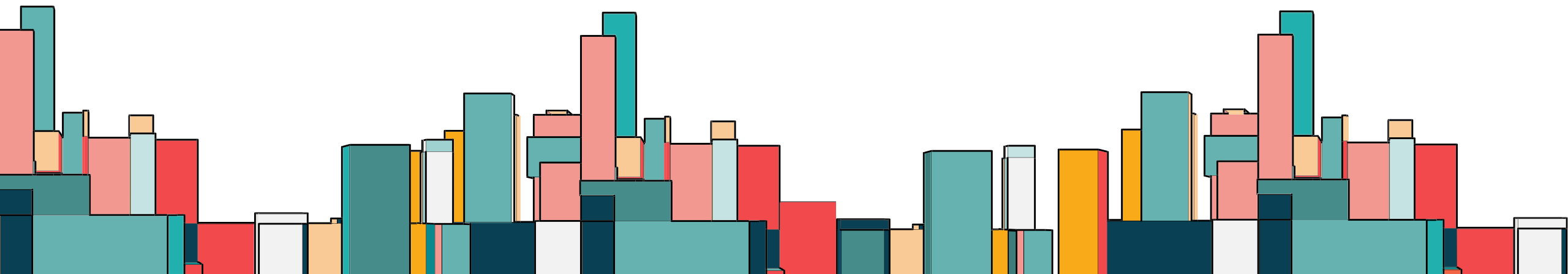
# 公寓或酒店（香港岛）

酒店名称

Weave Campus – Sai Ying Pun

[Weave Campus - Sai Ying Pun](#)

地点:西营盘皇后大道西 338 号



# 公寓或酒店（九龍）

公寓名称

One Pace 117  
一步居117

<https://www.centacbi.com/>

地点:漆咸道南117號

照片



# 公寓或酒店（九龍）

酒店名称

Weave Campus – Hung Hom

[香港红磡租房](#) | [香港 studio 租房](#) | [红磡短租房 - Weave Studios](#)

地点:红磡温思劳街 61 号

照片



酒店名称

森里公寓 ( THE QUAD )

[iRent 海外公寓长租平台](#)

地点:九龍紅磡漆咸道北470-478号

照片



# 非牟利机构营运(NGOS)

名称

Caritas 明愛  
明愛堅道宿舍

<https://chs.caritas.org.hk/page.aspx?73%2feWedQ4wfyzgFPZ%2bJmFw%3d%3d>

地点: 香港堅道 2 號明愛大廈

照片



名称

Caritas 明愛  
明愛堅尼地城宿舍

<https://chs.caritas.org.hk/page.aspx?73%2feWedQ4wfbGhPgayV6tg%3d%3d>

地点: 香港蒲飛路 27 號

照片



# 非牟利机构营运(NGOS)

名称

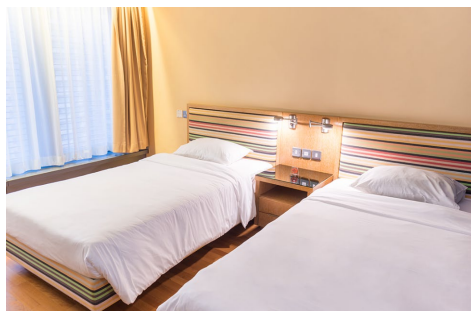
Y Loft

Y旅舍

<https://www.youthsquare.hk/stay>

地点:柴灣柴灣道238號

照片



名称

香港青年旅舍協會

YHA賽馬會摩星嶺青年旅舍

<https://www.yha.org.hk/zh/hostel/jockey-club-mt-davis-youth-hostel/>

地点:香港島薄扶林摩星嶺徑123號

照片



# 私人租赁物业

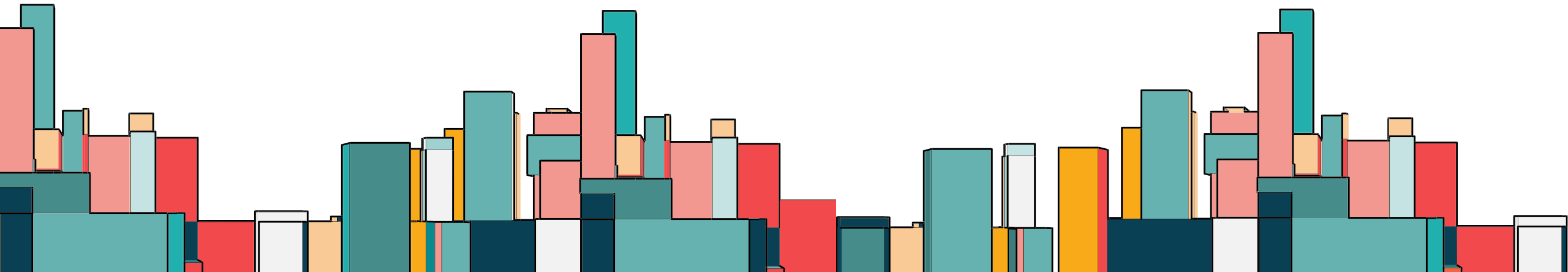
以下是非本地学生寻找私人租赁房产的流程：

## 1. 研究与准备在线房源：

- 使用专门发布租赁信息的网站和应用程序，例如28Hse、House730等。
- 预算：确定您的预算，包括租金、水电费和其他生活开支。
- 收集文件：准备申请所需的必要文件，例如收入证明、学生证和推荐信。

## 2. 联系房东或房产中介咨询：联系房东或房产中介，了解可用的房源。明确表达您的需求和

租赁期。虚拟看房：如果您无法亲自到场，可以要求虚拟看房或视频导览。



# 私人租赁物业

**3. 申请流程：**填写您所选房产的租赁申请表。这可能包括提交相关证明文件。

例如学生证，身份证等。

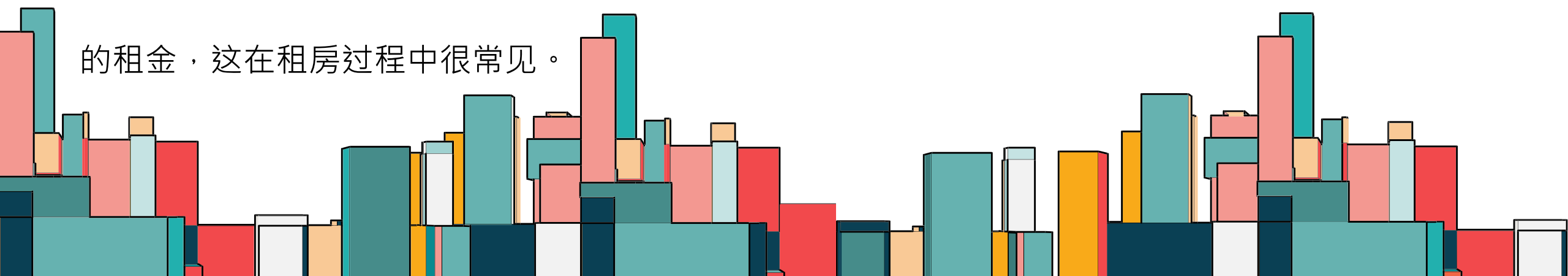
**4. 租约审查阅读租约：**签署前仔细阅读租约。注意租金、押金和维护责任的条款。澄清条款：

向房东咨询任何不清楚的条款或条件。

**5. 签署租约签署租约：**对条款满意后，签署租约。请务必保留一份副本以作记录。押金：准备

好按照租约规定支付押金。在香港租房，新租户通常需要预付相等於两个月租金的押金和一个月

的租金，这在租房过程中很常见。

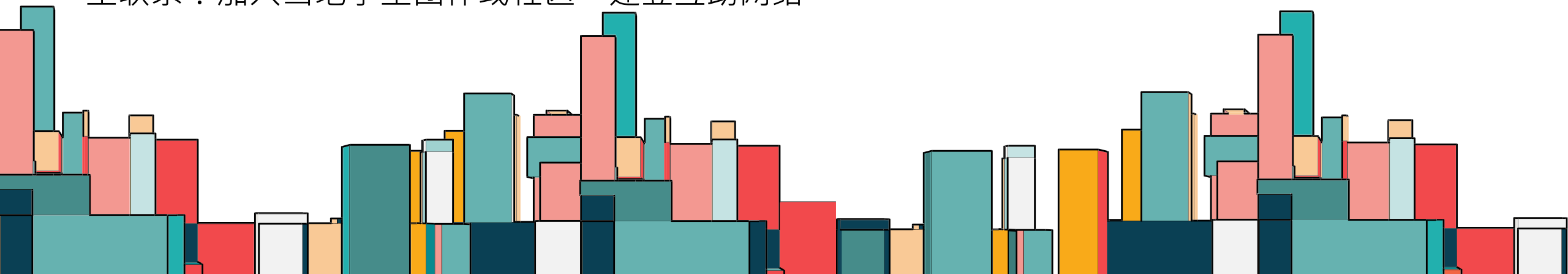


# 私人租赁物业

**6. 设置水电煤气账户**水电煤气账户：如果租金中不包含电费、水费、网费和燃气费，请联系公用事业供应商设置账户。

**7. 搬家规划搬家**：与房东协调搬家日期，并规划好物品的运输事宜。**房屋检查**：入住前，与房东一起检查房屋状况，记录房屋状况。

**8. 安顿下来熟悉环境**：了解周边环境，包括附近的杂货店、公共交通和便利设施。**与其他学生联系**：加入当地学生团体或社区，建立互助网络。



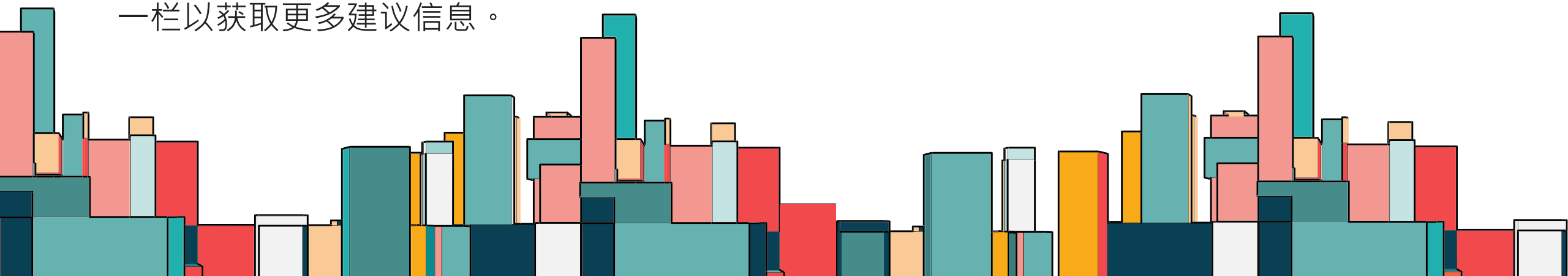
# 私人租赁物业

## 结论

遵循上述建议的步骤可以帮助非本地学生更有效地应对私人租房市场。务必与房东保持公开沟通，并在需要时向宿舍管理部寻求帮助。

建议学生参阅地产代理监管局出版的《[香港非本地学生租房指南](#)》以获取更多详情。

学生可前往地產代理監管局(「監管局」)製作的網頁中“[常见问题](#)”(例如续订或终止协议)一栏以获取更多建议信息。





# 搜索私人租赁物业的有用链接

## 网上房源搜索页

28Hse

<https://www.28hse.com/rent>

House730

<https://www.house730.com/rent/t1/>

## 房地产中介

中原地产 Centaline Property

<https://hk.centanet.com/findproperty/list/rent>

香港置業 Hong Kong Property

<https://www.hkp.com.hk/zh-hk/list/rent>

美聯物業 Midland Realty

<https://www.midland.com.hk/zh-hk/list/rent>

利嘉閣 Ricacorp Properties

<https://www.ricacorp.com/zh-hk/property/list/rent>

# 声明

香港树仁大学宿舍管理部（HMU）提供校外住宿资讯，仅供参考。大学不参与或负责学生/教职员作为租户与服务提供商/房东/房地产经纪人的任何交易。任何与租赁有关的事宜均在信息寻求者和信息提供者之间进行，大学不参与任何交易。

# 欢迎与宿舍管理部联系

办事处: 研究院综合大楼RLG403室

电话号码: 2804-8562

电邮: [hmu@hksyu.edu](mailto:hmu@hksyu.edu)

办公时间: 星期一至星期五

*9 a.m. to 1 p.m. and 2 p.m. to 6 p.m.*

(大学假期及公众假期除外)





# HKSYU

OFF-CAMPUS ACCOMMODATIONS  
INFORMATION HUB

HALL MANAGEMENT UNIT



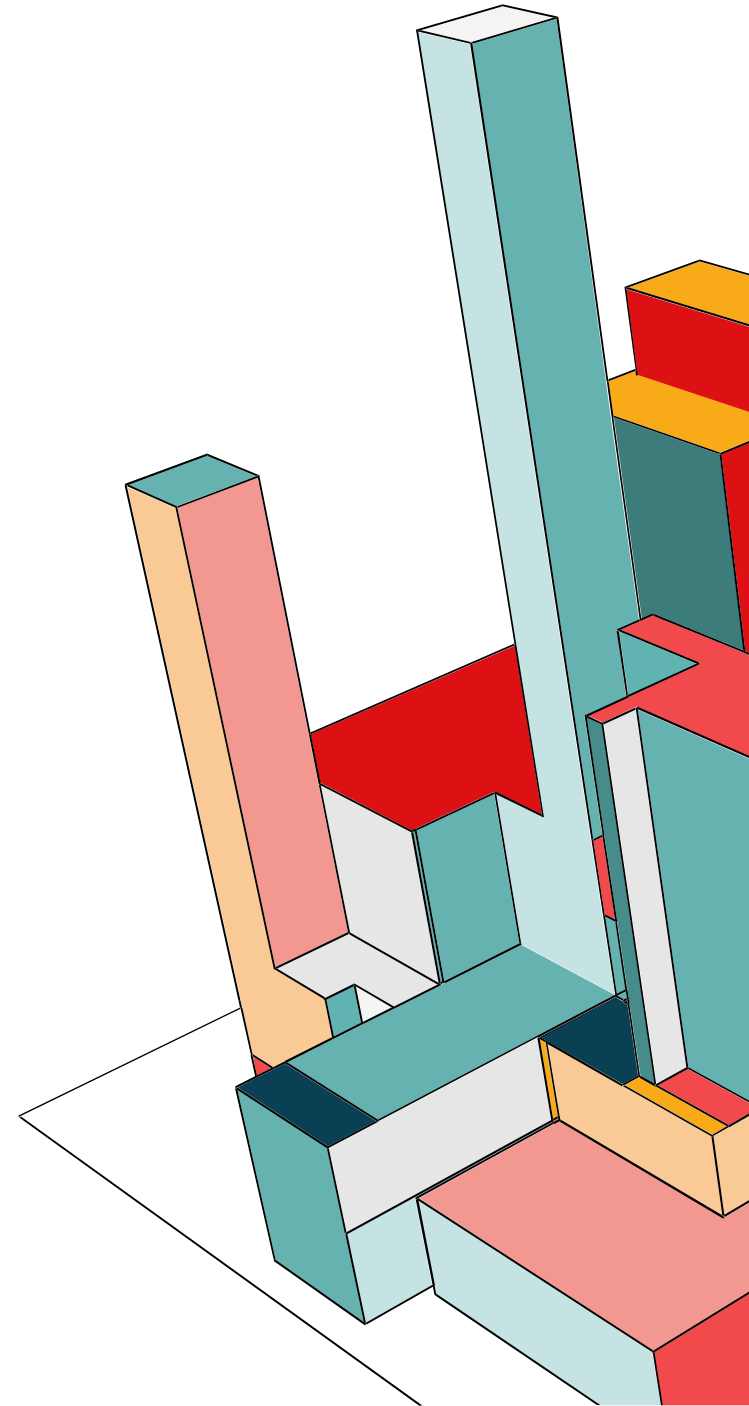
HKSYUHALL

Hall Management Unit

# PREFACE

Welcome to the Hong Kong Shue Yan University Off-Campus Accommodations Information Hub!

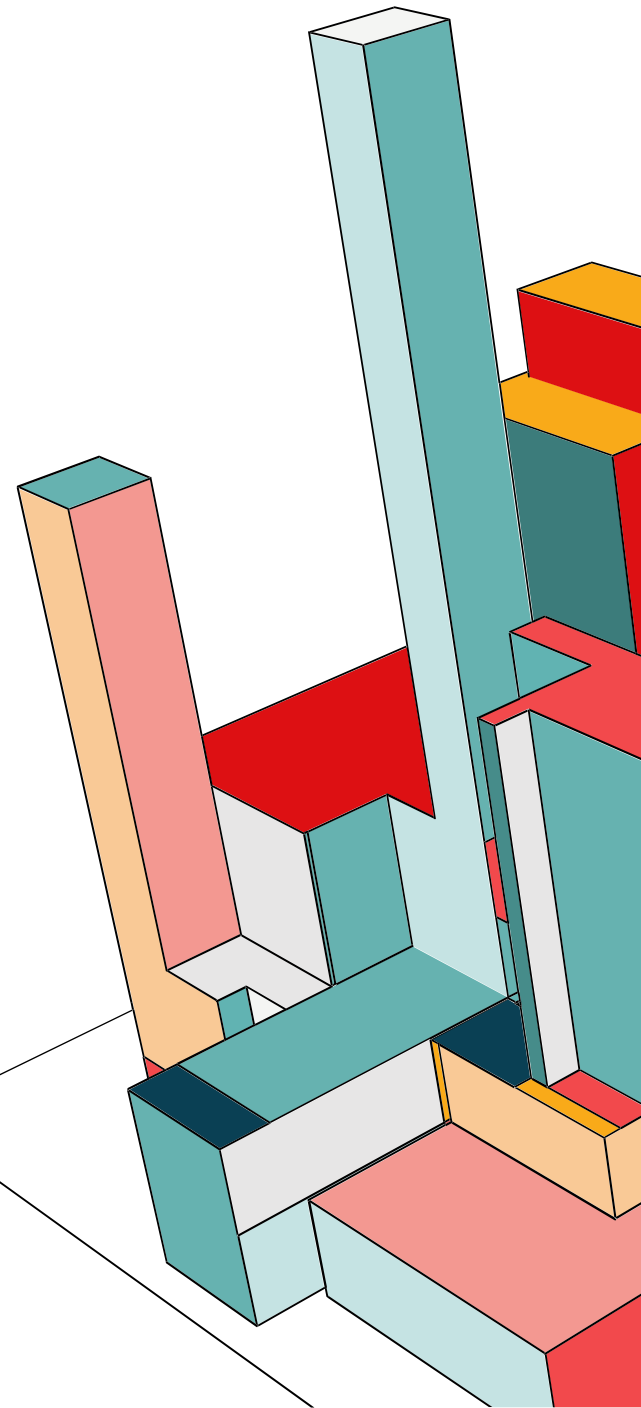
As students embark on their academic journeys, securing suitable housing is a crucial step that significantly impacts their experience. This page offers essential information and resources for off-campus accommodations. The Hall Management Unit (HMU) outlines rental policies and important terms to note when renting apartments or rooms independently in Hong Kong. Whether you are a new student searching for your first apartment or planning to live off-campus, we aim to help you make informed decisions.



# IN THIS PAGE, YOU WILL FIND:

- **Finding a Place:** Tips for finding accommodations efficiently, including online resources and local listings.
- **Lease Agreements:** Key details on lease terms, tenant rights, and responsibilities.
- **Budgeting:** Advice on estimating housing costs and managing expenses.
- **Types of Accommodations:** Overview of options, such as apartments, shared houses, and more.
- **Community Resources:** Local services, transportation, and amenities to enhance your living experience.

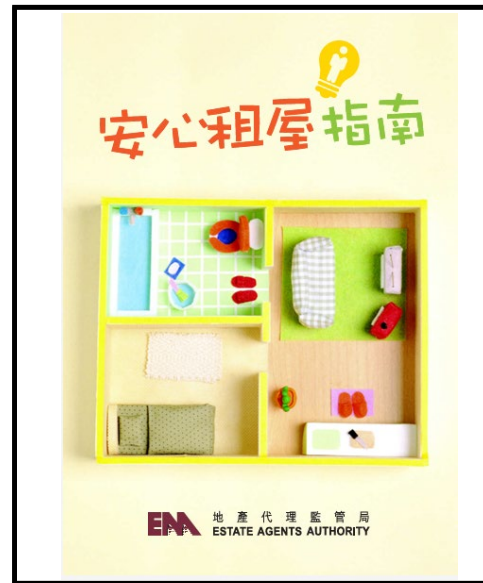
We encourage you to explore all options and contact HMU for support—your living situation significantly impacts your academic success and well-being. Best of luck in securing suitable accommodation in Hong Kong!



# USEFUL INFORMATION



非本地學生在香港租屋指南  
Tenancy Guide for Non-local  
students in Hong Kong



安心租屋指南



「專家分享：來港租買房屋  
避坑指南」網上講座重溫

# TYPES OF ACCOMMODATIONS

**Apartments  
or  
Hotels**

**Non-  
governmental  
organizations  
(NGOs)**

**Private  
Rental  
Properties**

# COMMUNITY RESOURCES

**Hong Kong Shue Yan University** is located on Braemar Hill in North Point, Eastern District of Hong Kong Island. The university's campus offers stunning views of Victoria Harbour from its elevated position. Built along Wai Tsui Road, the campus includes a Research Complex, Residential and Amenities Complex, Lady Lily Shaw Hall, Main Academic Building, and Library Complex, along with two canteens, a café, and student relaxation areas.

Nearby areas like Wan Chai, North Point, Fortress Hill, Tin Hau, and Causeway Bay provide easy access to supermarkets, restaurants, furniture stores, healthcare facilities, and recreational options.

## Transportation Options:

- **Bus Route 27:** North Point Ferry Pier → Braemar Hill
- **Bus Route 85:** Braemar Hill → Siu Sai Wan (Island Resort)
- **Green Minibus 25:** Braemar Hill ↔ Causeway Bay MTR Station
- **Green Minibus 49M:** Braemar Hill ↔ Tin Hau MTR Station
- **Shuttle Bus Service(provided services by University):** Quarry Bay & Causeway Bay MTR stations (designated times)

For details, visit: <https://www.hksyu.edu/tc/campus/campus-transportation>

# APARTMENTS OR HOTELS (HONG KONG ISLAND)

## Apartment Name

YHill by Y.X

YHill by Y.X 大學生公寓 Student Accommodation

<https://ydotx.com/zh/locations/yhill/>

Location :香港西環山道71-77號

## Photos



## Apartment Name

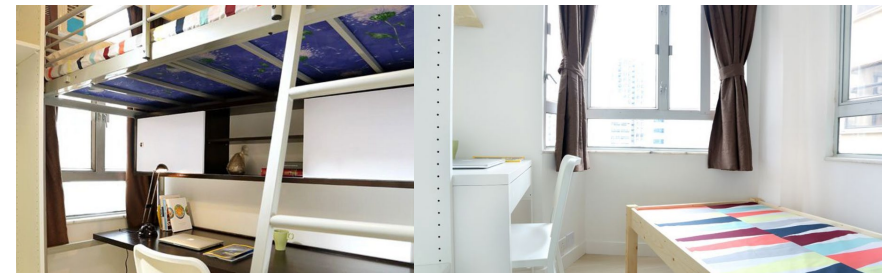
Contented Living

安怡居

<https://www.contentedlivings.com/room/?lang=zh-hans>

Location :皇后大道西341-343號 西營盤

## Photos



# APARTMENTS OR HOTELS (HONG KONG ISLAND)

## Apartment Name

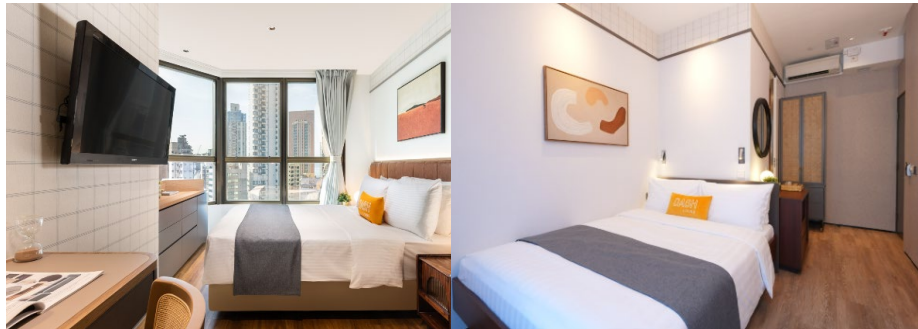
Dash living

Dash 服務式住宅

<https://www.dash.co/zh-tw/hong-kong>

Location :中環荷李活道263號

Photos



## Apartment Name

Owl Square@North Point

Owl Square 服務式住宅

<https://owlsquarecoliving.com/zh-hant/locations/detail/kam-ping-mansion>

Location :北角站 B1 出口

Photos



# APARTMENTS OR HOTELS (HONG KONG ISLAND)

## Hotel Name

MINI HOTEL CAUSEWAY BAY

香港銅鑼灣迷你酒店

<https://www.minihotel.hk/zh-causeway-bay>

Location : 香港銅鑼灣新會道8號

## Photos



## Hotel Name

IBIS HONG KONG NORTH POINT

宜必思香港北角酒店

<https://ibis.accor.com/zh/destination/city/hotels-hong-kong-v7750.html>

Location : 北角渣華道138號

## Photos



# APARTMENTS OR HOTELS (HONG KONG ISLAND)

## Hotel Name

Harbour Plaza North Point  
香港北角海逸酒店

<https://www.harbour-plaza.com/northpoint/sc/>

Location :香港北角英皇道 665 號

## Photos



## Hotel Name

Iclub Fortress Hill Hotel  
富薈炮台山酒店

<https://www.iclub-hotels.com/zh-CN/iclub-fortress-hill-hotel>

Location :北角麥連街18號

## Photos



# APARTMENTS OR HOTELS (HONG KONG ISLAND)

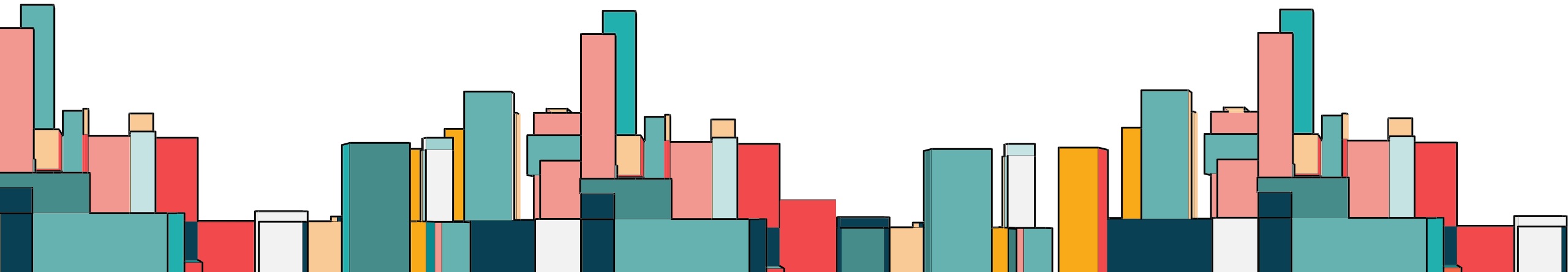
## Apartment Name

Weave Campus – Sai Ying Pun

[Weave Campus - Sai Ying Pun](#)

## Location:

338 Queen's Road West, Sai Ying Pun



# APARTMENTS OR HOTELS (KOWLOON)

## Apartment Name

One Pace 117  
一步居117

<https://www.centacbi.com/>

Location :漆咸道南117號

## Photos



# APARTMENTS OR HOTELS (KOWLOON)

## Apartment Name

Weave Campus – Hung Hom

[香港红磡租房 | 香港 studio 租房 | 红磡短租房 - Weave Studios](#)

## Location:

61 Winsillow Street, Hung Hom



## Apartment Name

THE QUAD

[iRent 海外公寓长租平台](#)

## Location :

470-478 Chatham Road North, Hung Hom, Kowloon



# NON-GOVERNMENTAL ORGANIZATIONS (NGOS)

## Name

Caritas 明愛  
明愛堅道宿舍

<https://chs.caritas.org.hk/page.aspx?73%2feWedQ4wfyzgFPZ%2bJmFw%3d%3d>

Location : 香港堅道 2 號明愛大廈

## Photos



## Name

Caritas 明愛  
明愛堅尼地城宿舍

<https://chs.caritas.org.hk/page.aspx?73%2feWedQ4wfbGhPqayV6tg%3d%3d>

Location : 香港蒲飛路 27 號

## Photos



# NON-GOVERNMENTAL ORGANIZATIONS (NGOS)

Name

Y Loft

Y旅舍

<https://www.youthsquare.hk/stay>

Location :柴灣柴灣道238號

Photos



Name

香港青年旅舍協會

YHA賽馬會摩星嶺青年旅舍

<https://www.yha.org.hk/zh/hostel/jockey-club-mt-davis-youth-hostel/>

Location :香港島薄扶林摩星嶺徑123號

Photos



# PRIVATE RENTAL PROPERTIES

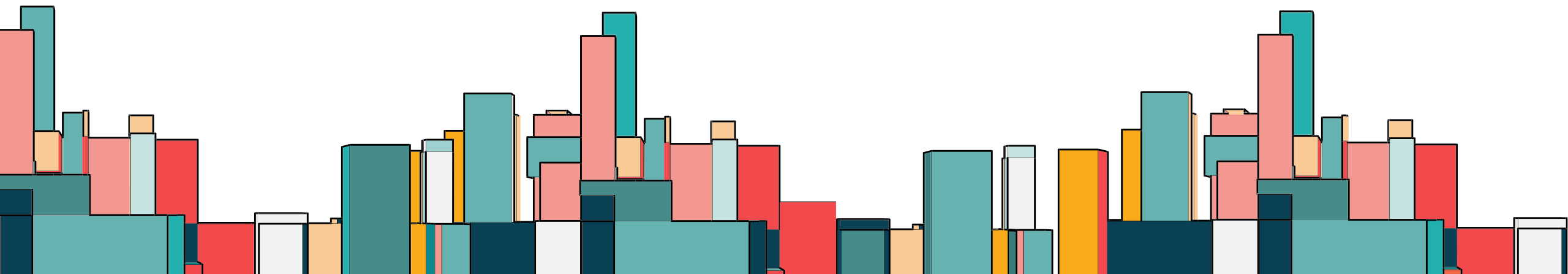
Here's a step-by-step procedure for non-local students seeking private rental properties:

## 1. Research and Preparation

- Online Listings:Use rental platforms such as 28Hse, House730, and similar websites.
- Budgeting:Determine your budget, accounting for rent, utilities, and additional living costs.
- Documentation: Prepare required documents (e.g., proof of income, student ID, references) for rental applications.

## 2. Contact Landlords or Agencies

- Inquiries:Contact landlords or property agencies to inquire about listings. Specify your requirements (e.g., budget, lease duration).
- Virtual Tours:If you cannot visit in person, request virtual tours or video walkthroughs.



# PRIVATE RENTAL PROPERTIES

## 3. Application Process

- Complete Application:** Fill out rental applications for your chosen properties. This may include submitting your documentation.

## 4. Lease Review

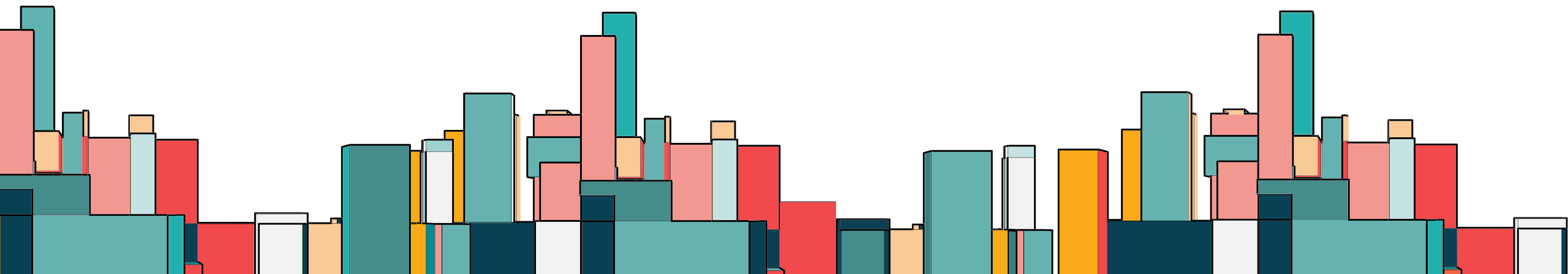
- Read the Lease:** Carefully review the lease agreement before signing. Pay attention to terms regarding rent, security deposits, and maintenance responsibilities.

- Clarify Terms:** Ask the landlord about any unclear terms or conditions.

## 5. Signing the Lease

- Sign the Lease:** Once you're satisfied with the terms, sign the lease. Ensure you keep a copy for your records.

- Security Deposit:** Be ready to pay the security deposit as stipulated in the lease. It is customary in Hong Kong to have a new renter pay two months' rent for deposit and one month's rental fee in advance, which are common in the rental process.



# PRIVATE RENTAL PROPERTIES

## 6. Setting Up Utilities

Utility Accounts: Contact utility providers to set up accounts for electricity, water, internet, and gas, if not included in the rent.

## 7. Moving In

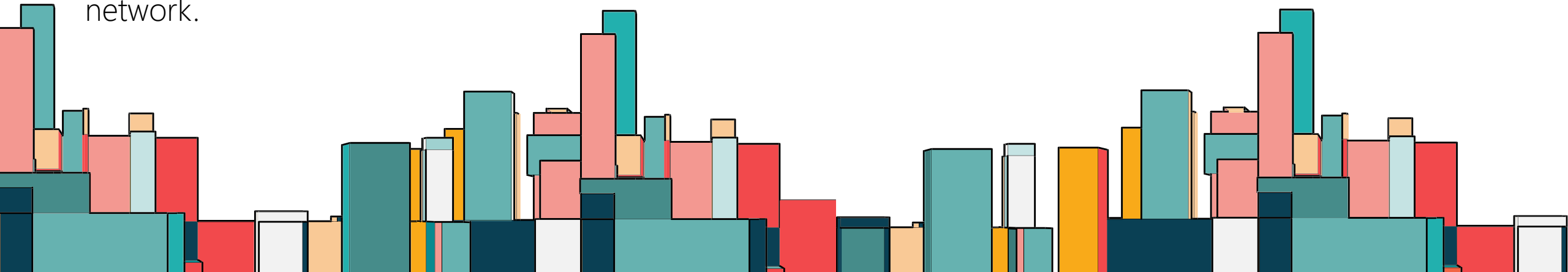
Plan Your Move: Coordinate your move-in date with the landlord and plan logistics for transporting your belongings.

Inspection: Conduct a walkthrough with the landlord to document the property's condition before moving in.

## 8. Settling In

Familiarize Yourself: Get to know the area, including nearby grocery stores, public transportation, and amenities.

Connect with Other Students: Join local student groups or communities to build a support network.



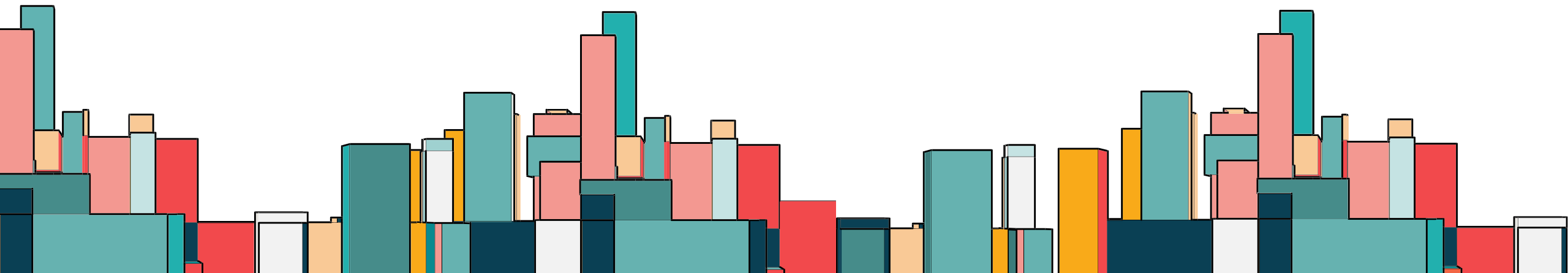
# PRIVATE RENTAL PROPERTIES

## Conclusion

Following these steps can help non-local students navigate the private rental market more effectively. Always communicate openly with landlords and seek assistance from your university's housing office if needed.

Students are suggested refer to the “[Tenancy Guide for Non-local Students in Hong Kong](#)” published by Estate Agents' Authority) for more information.

Students may go to the website by Estate Agents' Authority. The corner of “[Frequently Asked Questions](#)” (such as renewal or termination of agreement) for more suggested information.





# USEFUL LINKS FOR SEARCHING PRIVATE RENTAL PROPERTIES

## Online Searching website

28Hse

<https://www.28hse.com/rent>

House730

<https://www.house730.com/rent/t1/>

## Property Agencies

中原地產 Centaline Property

<https://hk.centanet.com/findproperty/list/rent>

香港置業 Hong Kong Property

<https://www.hkp.com.hk/zh-hk/list/rent>

美聯物業 Midland Realty

<https://www.midland.com.hk/zh-hk/list/rent>

利嘉閣 Ricacorp Properties

<https://www.ricacorp.com/zh-hk/property/list/rent>

# DISCLAIMER

The Hall Management Unit of Hong Kong Shue Yan University provides off-campus accommodation listings for reference purposes only. The University does not participate in, endorse, or assume liability for any rental transactions between students/faculty (tenants) and landlords/real estate agents. All leasing agreements, disputes, or obligations are exclusively between the involved parties.

# GET IN TOUCH WITH HALL MANAGEMENT UNIT

*Office: RLG403, Research Complex*

*Direct line: 2804-8562*

*Email: [hmu@hksyu.edu](mailto:hmu@hksyu.edu)*

*Office Hours: Mon to Fri*

*09:00 a.m. to 1:00 p.m. and 2:00 p.m. to 6:00 p.m.*

*(Closed on Saturday, Sunday, school holidays and public holidays)*

